

Name		Roll Number	
-------------	--	--------------------	--



**INDIAN SCHOOL MUSCAT
MIDDLE SECTION
ANNUAL EXAMINATION 2018-19**



SUBJECT – SCIENCE

Code: MYSC03

CLASS: VII

Time Allotted: 2 ½ Hrs.

05.03.2019

Max .Marks: 80

General Instructions.

1. The question paper comprises of **two Sections, A and B**. You have to attempt both the sections.
2. **All** questions are **compulsory**.
3. **All answers should be written in the answer sheet provided.**

SECTION A

1.Fill in the blanks

- a. Insects such as grasshoppers and cockroaches have openings called _____ on the sides of their body. 1
- b. The silk filaments are taken out from the cocoon by a process called _____. 1
- c. The final product of protein digestion is _____. 1
- d. Dentists use _____ mirror to examine the teeth closely. 1
- e. The increased wind speed is accompanied by a _____ air pressure. 1
- f. The fluid part of the blood is called _____. 1

2. Choose the correct answer

- a. During heavy exercise, we get cramps in the legs due to the accumulation of _____ 1
 - i) carbon dioxide
 - ii) alcohol
 - iii) lactic acid
 - iv) water
- b. Scientist who discovered magnetic effect of electric current is _____ 1
 - i) Isaac Newton
 - ii) Hans Christian Oersted
 - iii) Thomas Alva Edison
 - iv) Alfred Nobel
- c. Which of the following pair of teeth differ in structure but are similar in function? 1
 - i) Canines and Incisors
 - ii) Premolars and Canines
 - iii) Incisors and Molars
 - iv) Molars and Premolars
- d. Chemical name of baking soda is _____ 1
 - i) sodium carbonate
 - ii) sodium bicarbonate
 - iii) calcium hydroxide
 - iv) calcium carbonate

- e. In Philippines, the cyclones are called as 1
 i) Typhoon ii) Willy-willies
 iii) Hurricane iv) Hail storms
- f. Which of the following reproduce through leaves? 1
 i) Jasmine ii) Oxalis
 iii) Hibiscus iv) Bryophyllum

3. State TRUE or FALSE

- a. The size of the chest cavity increases during inhalation. 1
 b. An electric bell has an electromagnet. 1
 c. Silkworms secrete fibre made of protein. 1
 d. The images formed by a concave mirror are always virtual. 1
 e. Plants transport water through phloem. 1
 f. The basic unit of speed is km/h. 1

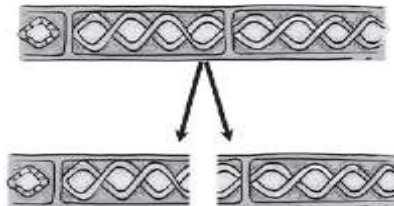
4. Give ONE word / term for the following

- a. Coil of wire used in a heater. 1
 b. The rearing of silkworms for obtaining silk. 1
 c. The bacterium that causes a fatal blood disease called sorter's disease. 1
 d. Source from which litmus indicator is obtained. 1
 e. Largest gland in the human body. 1
 f. Funnel shaped clouds with rotating winds that reaches from sky to ground. 1
 g. The cell formed as a result of fusion of male and female gametes. 1

SECTION B

Questions 5 to 19 carry 1 mark each

- 5 What are stomata? What is its function? 1
 6 What are electromagnets? Give one situation where electromagnets are used. 1
 7 What are the two types of fibres that form the fleece of a sheep? 1
 8 What are villi? State its function. 1
 9 We cannot see a source of light through a bent tube. Give Reason. 1
 10 State two situations which give rise to generation of wind currents. 1
 11 Give one point of difference between odometer and speedometer. 1
 12 (a) Identify the microorganism. 1
 (b) Name the mode of asexual reproduction shown in the figure.



- 13 What is an MCB used for? 1
- 14 Name the type of carbohydrate that ruminants can digest, but not humans. Give reason. 1
- 15 How many colours is white light composed of? Which are they? 1
- 16 It is difficult to ride a bicycle against the direction of wind. Why? 1
- 17 A pendulum takes 25 seconds to complete 20 oscillations. What is the time period of the pendulum? (Write the necessary steps) 1
- 18 How do plants benefit from seed dispersal? 1
- 19 Plot the shape of the distance-time graph for the motion of a truck parked on the road side. 1

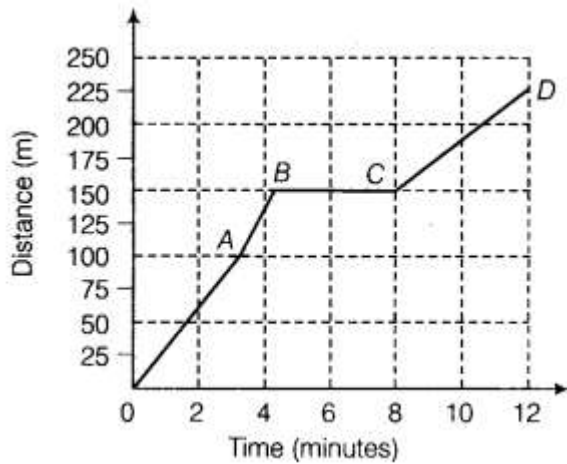
Questions 20 to 29 carry 2 marks each

- 20 What do you mean by anaerobic respiration? Why are yeast used to make wine and beer? 2
- 21 What is shearing? Why does shearing not hurt the sheep? 2
- 22 Explain the role played by the following digestive juices in digestion and name the organs which secrete them. 2
A) Bile Juice B) Hydrochloric acid
- 23 Draw a neat diagram showing the path of parallel rays of light through a converging lens. 2
- 24 How are acid rain formed? What are the effects of acid rain? 2
- 25 Write any two differences between arteries and veins. 2
- 26 A bus moves at a constant speed of 45 km/h for 10 minutes. What is the distance covered by the bus? (Write the necessary steps) 2
- 27 Distinguish between unisexual flower and bisexual flower with examples. 2
- 28 Why do we often sneeze when we inhale a lot of dust-laden air? 2
- 29 You are given two unlabelled bottles A and B containing colourless solutions, such that one of them is acid and the other basic. How will you distinguish between them using phenolphthalein as indicator. 2

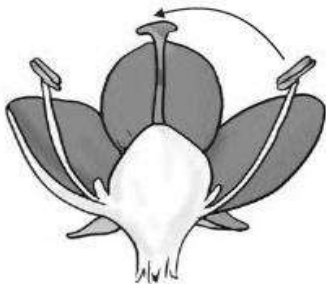
Questions 30 to 34 carry 3 marks each

- 30 (a) Draw the symbols of the following circuit components: 3
(i) Electric cell (ii) Electric bulb
(b) When is a circuit said to be:
(i) closed (ii) open
- 31 List any two characteristics of the image formed by the following: 3
(a) Convex mirror (b) Plane mirror (c) Concave lens
- 32 (i) What is neutralisation reaction? 3
(ii) Explain why:
(a) Calamine solution is applied on the skin when an ant bites.
(b) Organic matter is sometimes added to the soil.

- 33 Tom goes to the football ground to play football. The distance-time graph of his journey from his home to the ground is given in the figure below. 3



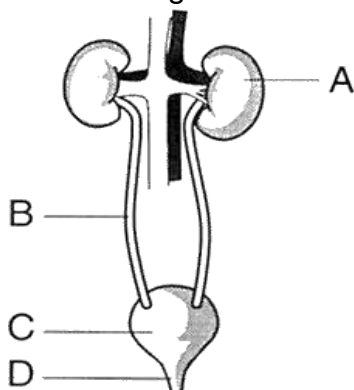
- (a) What does the graph between the points B and C indicate about the motion of Tom?
 (b) Is the motion between 0 to 4 min uniform or non-uniform?
 (c) What is his speed between 8 and 12 minutes of his journey?
- 34 (a) Which type of pollination does the figure indicate? 3



- (b) Give one point of difference between self-pollination and cross-pollination.
 (c) Define the term fertilization.

Questions 35 carries 5 marks

- 35 (a) Observe the figure and label the parts A, B, C and D. 5



- (b) What is the main function of kidneys?
 (c) What is dialysis? When is this process of dialysis carried out?